



ClaroLux[®]
LANDSCAPE LIGHTING

DL20 Specification Sheet DL20 Crescent

FEATURES

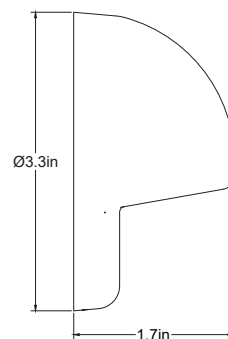
- Lifetime Warranty
- Constructed For Extreme Conditions
- Eco-Efficient LED Technology
- Available in Custom Colors & Finishes
- Available Only Through ClaroLux Installation Professionals

APPLICATIONS

- Illuminating Decks, Steps, Patio Areas, & Docks
- Post, Wall, Solid Surface Mounting
- Ideal For High Traffic & Commercial Locations

QUICK SPECS

- Bi-Pin
- Max Wattage: 10W
- Wire AWG: 18-2
- Wire Lead: 8ft
- Warranty: Lifetime



AVAILABLE FINISHES



Rev 7/14/23

Designed, Finished and Assembled in America with US and Global Components
Factory Direct • Professional Grade • Landscape Lighting Fixtures, Supplies and Accessories

2501 Greengate Drive | Greensboro, NC 27406 | ClaroLux.com